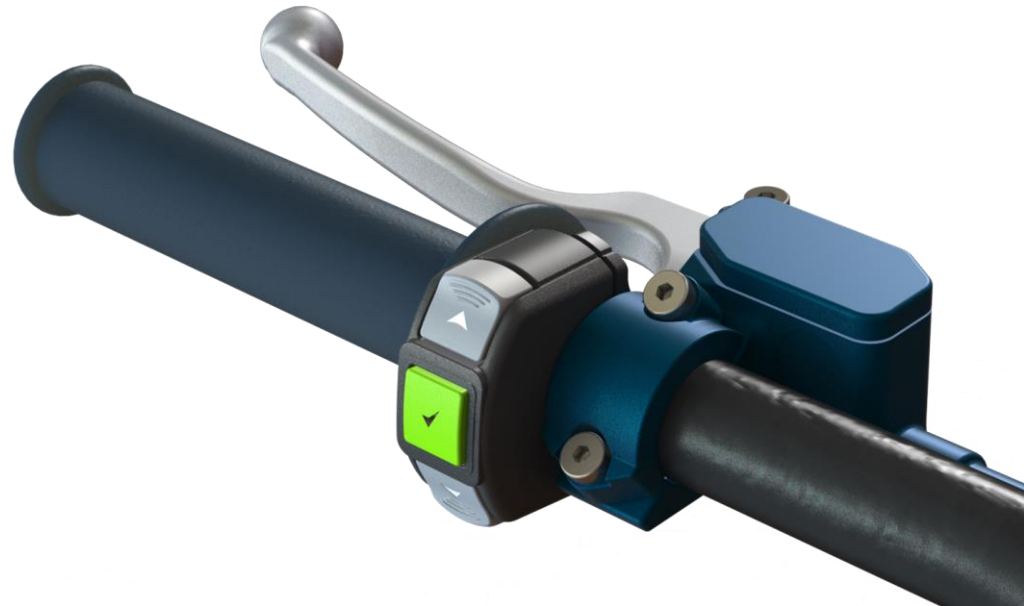




# COMMAND MODULE REF. 134





### COMMAND MODULE 134

#### Purpose

Our new REF. 134 integrates a central **tell-tale** or **push-button** and up to 2 extra push-buttons or 2 led tell-tales. It allows to customize the central device to different purposes as selector, map setting, trip, start and stop or switch.

Currently we produce four versions: Mod. A LED, Mod. B cover, Mod. C push-button and Mod. D switch.

His small dimensions and the several customization options allows you to adapt it to any need or vehicle.



**Mod. A**  
**LED**



**Mod. B**  
**COVER**



**Mod. C**  
**PUSH**



**Mod. D**  
**SWITCH**

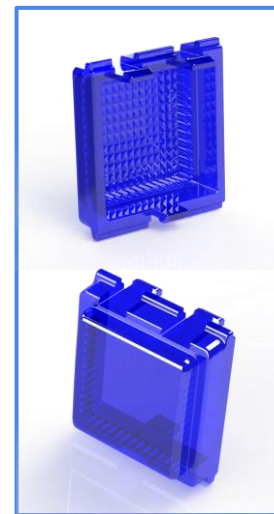


### CENTRAL LED VERSION MOD. A

- Two push-buttons
- Central tell-tale indicator (Smart Led optional)



Prismatic light diffusion





### CENTRAL COVER VERSION MOD. B

- Two push-buttons
- Central cover indicator (no backlighted) optional

### Fixation clamps

Model A

Model B



Opaque Cover



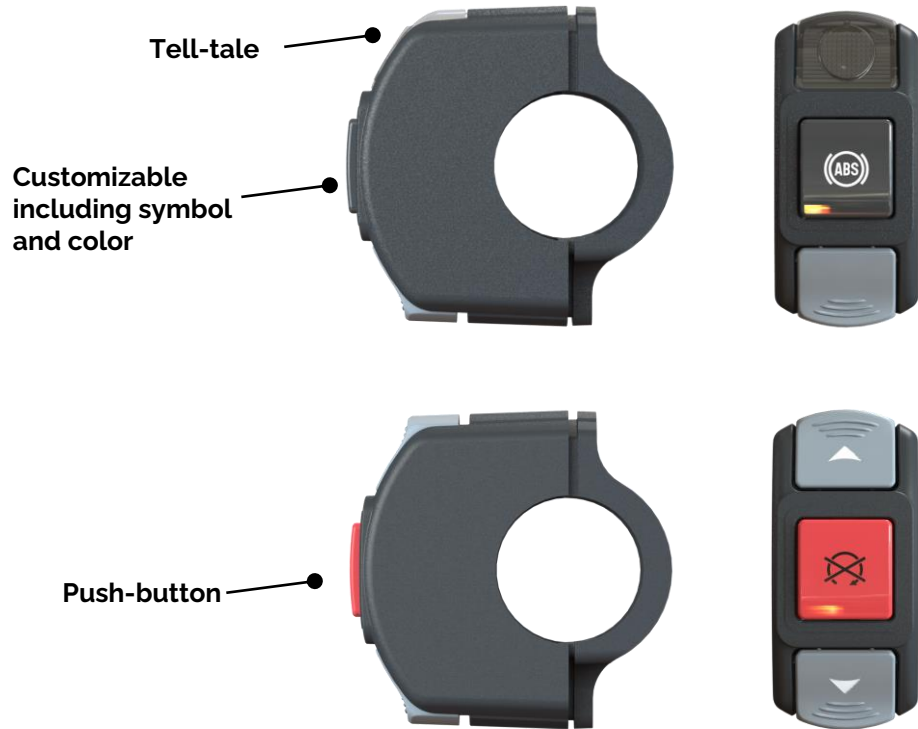
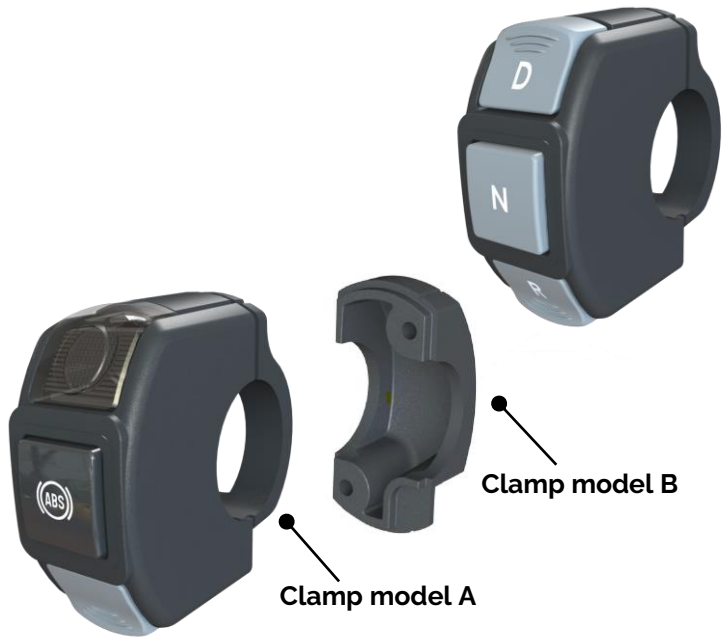
Cover customizable, without Led





### CENTRAL PUSH-BUTTON VERSION MOD. C

- Two push-buttons / one push-button + one tell-tale
- Three push-buttons drive - neutral -rear





### CENTRAL SWITCH ON OFF LATCHING VERSION MOD. D

- Two push-buttons up and down or tell-tale indicators
- Central switch **on-off** latching version



← Tell-tale indicator

← On Off latching switch

← Push-button



### ASSEMBLY PROPOSAL FOR THE RIGTH SIDE





**#Smart**

**#Small**

**#Safe**



European Quality

**THANK YOU**