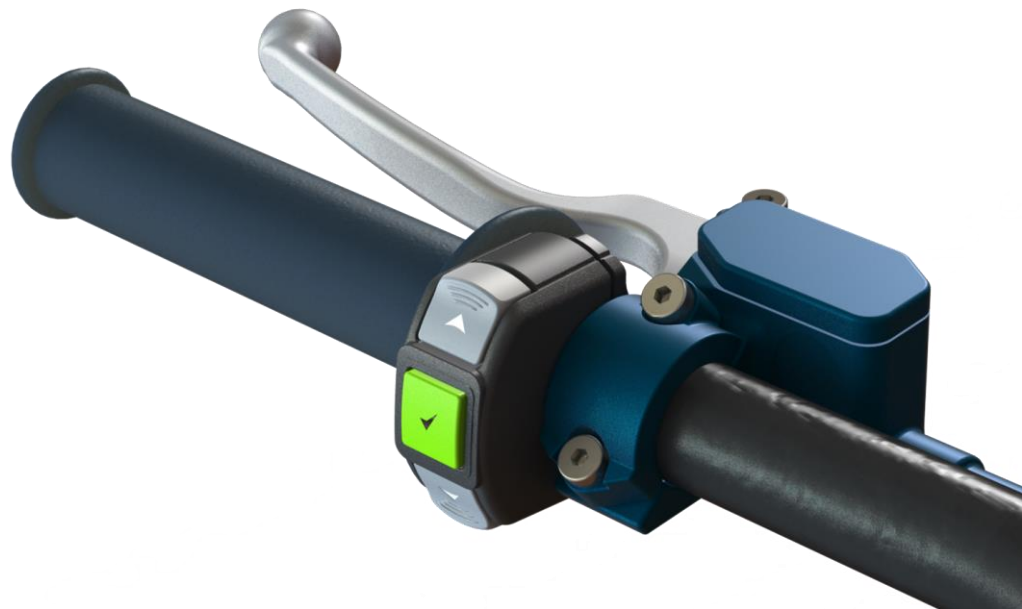


Leonelli®



COMMAND MODULE

REF. 134



January 2021



COMMAND MODULE 134

Purpose

Our new REF. 134 integrates a central **tell-tale** or **push-button** and up to 2 extra push-buttons or 2 led tell-tales. It allows to customize the central device to different purposes as selector, map setting, trip, start and stop or switch.

Currently we produce four versions: Mod. A LED, Mod. B cover, Mod. C push-button and Mod. D switch.

His small dimensions and the several customization options allows you to adapt it to any need or vehicle.



Mod. A
LED



Mod. B
COVER



Mod. C
PUSH



Mod. D
SWITCH

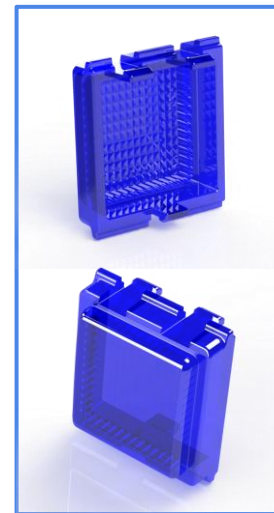


CENTRAL LED VERSION MOD. A

- Two push-buttons
- Central tell-tale indicator (Smart Led optional)



Prismatic light diffusion





CENTRAL COVER VERSION MOD. B

- Two push-buttons
- Central cover indicator (no backlighted) optional



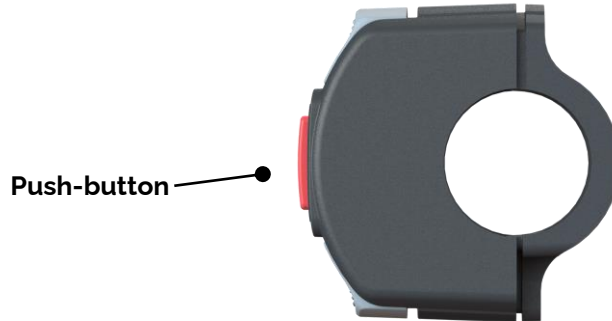
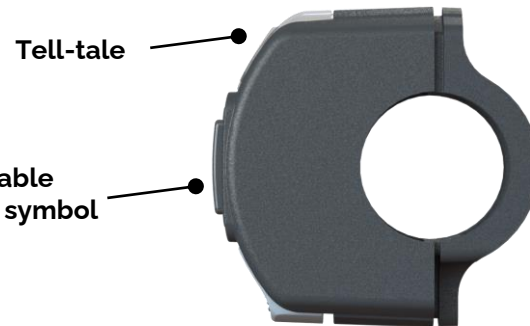


CENTRAL PUSH-BUTTON VERSION MOD. C

- Two push-buttons / one push-button + one tell-tale
- Three push-buttons drive - neutral -rear



Customizable
including symbol
and color





CENTRAL SWITCH ON OFF LATCHING VERSION MOD. D

- Two push-buttons up and down or tell-tale indicators
- Central switch **on-off** latching version



- ← Tell-tale indicator
- ← On Off latching switch
- ← Push-button



ASSEMBLY PROPOSAL FOR THE RIGTH SIDE





#Smart

#Small

#Safe



European Quality

THANK YOU